

NEW ANY 002 & NEW ANYREWINDER

2015 NEW ANYTRON PRINTERS AERO-DYNAMIC DESIGN & ADVANCED FEATURES

NEW ANY002 Economic but Professional level digital label press

New 2015 version of ANY002 label press machine – everything is changed except for printer engine itself. In combination with NEW ANYREWINDER, it provides fully functional features, like automatic feeding, tension controlled rewinding, cutting on the fly, media saving, duplex printing, counting and etc.

1. AERO-DYNAMIC DESIGN

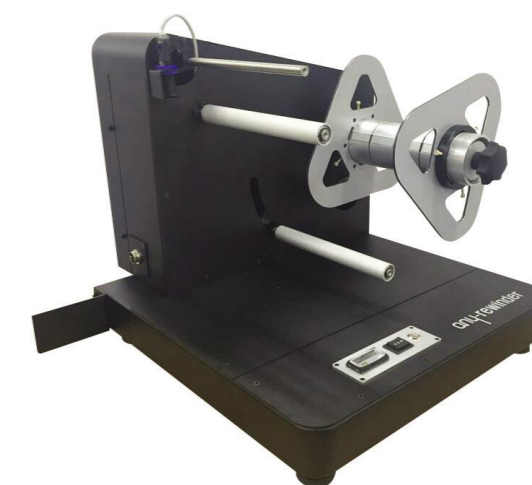
New models of ANYTRON's biggest difference is in their unique design. Strong body with sophisticatedly combined parts will prove the design is for flexibility, accuracy and functionality not just for beauty.

2. EASIER THAN EVER

New ANY002 provides the easiest experience with minimum training time by intuitive operation and fast preparation. Relax. there's almost nothing to manually measure or take care of during the process.

3. ALL INCLUSIVE

New ANY002 can support all of pre-cut labels with gap, preprinted labels with black mark and clear or duplex labels with back mark on backside. It provides automatic feed registration in the center and media saving by both of sensor and encoder. Combined new ANYREWINDER is providing different tension control mode and reverse mode with counting option.



[Details about New ANYREWINDER]

- Extension bar to keep exact registration with printer
- LED switch on / off to activate rewinder motor
- Black mark sensor and counter panel
- 2 different tension control modes (proportional/ on-off)
- Reverse rewinding mode for duplex printing
- Gradual acceleration at starting for media setup
- Automatic stop at job end by communication with printer
- Supporting different width rolls by web guides
- Net size / weight : 598(L) x 548(W) x 462(H) mm / 26 kg
- Single cable connection to the printer for power and data

[Details about New ANY002]

- User friendly design and easy operation
- Highly durable prints for water, scratch and UV
- Max. 9m per minute (30feet/minute)
- High-capacity 256MB RAM and HDD 160GB
- Highly stable digital single-pass LED engine
- Printing maximum 1.2m-long labels
- Advanced color management by RIP software
- Variable data support such as barcodes, QR codes, and serial numbers (option)
- Windows driver for every application s/w
- Sensors for pre-printed and pre-cut labels
- Interface : High-speed USB, TCP/IP
- OS : Windows XP, Vista, 2003, 7, 8, 10
- Compatible with various substrates (All paper, White PET, Clear PET, certified PP/PVC and etc.)
- Supporting 215mm X 500m media rolls
- Supporting narrow media rolls in 4" and 6".
- Printing registration accuracy of $\pm 0.2\text{mm}$
- Automatic or manual cutting after printing
- Media saving by length and no. of labels
- Supporting duplex printing by back-side sensor

| MODEL NAME | ANY001 | ANY002 | NEW ANY002 |
|---------------------------------|--------------------------|--------------------------|------------------------|
| FEEDING REGISTRATION ACCURACY | $\pm 0.5\text{mm}$ | $\pm 0.5\text{mm}$ | $\pm 0.2\text{mm}$ |
| MEDIA LOADING ADJUSTMENT | Manually by ruler | Automatic in center | Automatic in center |
| STRAIGHT FEEDING STABILIZATION | 1.5~2 meters at starting | 1.5~2 meters at starting | 20~30 cm at starting |
| SENSOR CALIBRATION | Manual | Manual | Semi-automatic |
| MAX. ROLL MEDIA DIA | 300mm | 280mm | 370mm |
| MAX. ROLL MEDIA LENGTH | 250m | 200m | 500m |
| MEDIA SAVING OF CONTINUOUS ROLL | YES | NO | YES |
| MEDIA SAVING OF PRECUT ROLL | YES | YES | YES |
| LABEL COUNTER | YES | NO | YES |
| INLINE REWINDER | YES | NO(OFFLINE OPT) | YES (WITH ANYREWINDER) |
| AUTO-FEEDING BY MOTOR | YES | NO | YES |
| ENCODER IN FEEDER | YES | NO | YES |
| GAP SENSOR | YES | OPTIONAL | YES |
| FRONTSIDE BLACKMARK SENSOR | YES | NO | YES |
| BACKSIDE BLACKMARK SENSOR | MANUAL REPOSITION | NO | YES |
| REVERSE REWINDING FOR DUPLEX | YES | N/A | YES (WITH ANYREWINDER) |
| INTERFACE CABLE | EXPOSED | EXPOSED | HIDDEN |
| PRINTER ANGLE ADJUSTMENT | NOT POSSIBLE | NOT POSSIBLE | POSSIBLE |

